



DoallTech

Maximizing Value and Customer Satisfaction through Technology Innovation

DoallTech Korea | since 2000

DoallTech Vietnam | since 2016

DoallTech Japan | since 2018

Cheolho Choi / CEO & Founder

CONTENTS

- 
1. About DoallTech
 2. BIM Services
 3. DoallTech Solutions
 4. BIM Project Portfolio

About DoallTech

Head Office in Korea

- Since its founding in 2000 as a specialized Construction IT company in Korea, DoallTech has been providing a specialized BIM Services like BIM Modeling, BIM Analysis, BIM Documentation, BIM-based clash detection, and constructability etc.

- About DoallTech**

- Corporate Name DoallTech Co., Ltd
- Business Service BIM Engineering Services (Modeling / Engineering/ Consulting)
Development of Customized Construction IT Solution besides BIM add-on & Library
BIM based QTO, 2D based QTO visualization

DoallTech Vietnam

- Vietnam branch was established in 2017 as a specialized BIM company and has been providing variable BIM Service (BIM Modeling/ Develop BIM Library)

- Brief History**

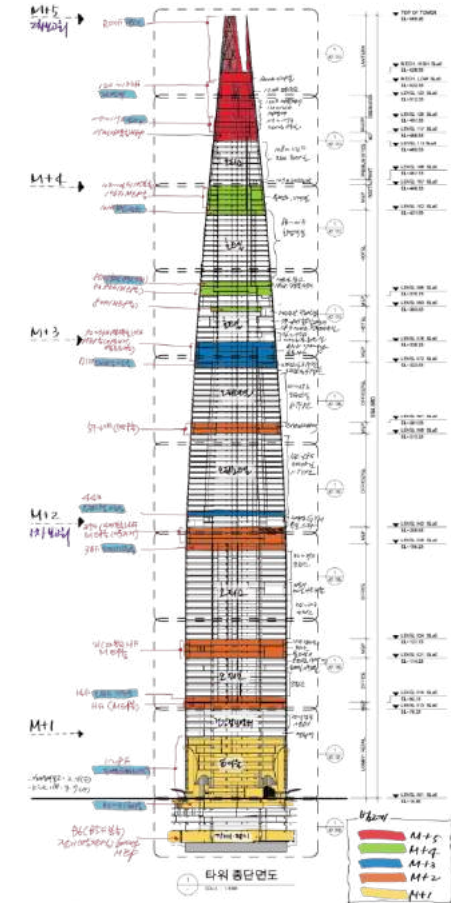
- 2016 Test operation & Prepare Establishment of Vietnam branch office
- 2017 Established Vietnam branch office in Hanoi, Vietnam
Staffs (Korean – 2 , Vietnamese – 16)
- 2018 The Partner of Global BIM (Kajima Co., Japan)
- 2024 Performed various BIM projects
Staffs (Korean – 5, Vietnamese – 60)

About DoallTech

Wide Experiences in BIM Service

400 < Projects

BIM Service Performance No.1 in Korea



Lotte World Tower BIM Data Build Study

About DoallTech

Best BIM Project Performance Rank in Korea

2016

BIM Performance Rank
by category

IT & Software Companies		
Total No. of Projects		
순위	회사명	건수
1	주도올테크	13
2	주코스텍빌테크	3
3	한국씨.아이.엔주	1
3	주맥스비아이엠	1

Total No. of Contracts		
순위	회사명	건수
1	주도올테크	13
2	주코스텍빌테크	3
3	한국씨.아이.엔주	1

Total Project Cost		
순위	회사명	비용
1	주도올테크	1,418,106,000 원
2	한국씨.아이.엔주	358,900,000 원
3	주코스텍빌테크	272,250,000 원

※ Reference Date : Dec. 2016

2009~2016

Gross BIM Performance Rank
by category

IT & Software Companies		
Total No. of Projects		
순위	회사명	건수
1	주도올테크	80
2	주맥스비아이엠	62
3	한국씨.아이.엔주	66
4	주코스텍빌테크	43
5	주위메이드아이엔씨	25
6	디디알소프트	7
7	주리엔테크시스템	4
8	주식회사 디티론	1

Total No. of Contracts		
순위	회사명	건수
1	주도올테크	80
2	한국씨.아이.엔주	53
3	주코스텍빌테크	42
4	주맥스비아이엠	36
5	주위메이드아이엔씨	25
6	디디알소프트	7
7	주리엔테크시스템	4
8	주식회사 디티론	1

Total Project Cost		
순위	회사명	비용
1	주도올테크	16,682,958,000 원
2	한국씨.아이.엔주	6,235,066,000 원
3	주코스텍빌테크	4,439,733,550 원
4	주위메이드아이엔씨	1,891,700,000 원
5	주맥스비아이엠	1,612,673,000 원
6	디디알소프트	994,990,000 원
7	주리엔테크시스템	271,000,000 원
8	주식회사 디티론	234,000,000 원

※ Reference Date : Dec. 2016



도올테크 '수행·계약건수·용역비' 3관왕

7시 30분 00:00:00 00:00:00

발달스태드팀, 지난해 BIM 적용실적 분석

도올테크와 정밀건축, 최정건축이 3차원 설계인 BIM의 2013년 수행과 계약 실적에서 업계 수위를 기록했다.

BIM 전문업체 가운데서는 도올테크가 수행실적과 계약, 용역비 기준에서 3관왕을 차지하면서 부동의 1위를 고수했고, 설계사 가운데서는 최정건축이 계약과 용역비 기준에서 선두를 차지했다.

19일 발간스태드팀에 따르면 작년 한해 BIM(Building Information Modeling) 적용실적을 집계한 결과, BIM 전문업체 10곳 수행건수 62건, 수탁공사 20곳, 103건, 3천2천여명, 4억 111억 원으로 나타났다.

이 가운데 BIM 전문업체 부문은 보면 도올테크가 총 수행건수 16건으로 선두 자리를 차지했다. 이에 최정건축(12건), 최정건축(11건), 최정건축(11건), 최정건축(10건), 최정건축(9건), 최정건축(9건) 순으로 나타났다.

계약용역건수 기준으로 보면 순위도 수행건수 순위와 비슷한 추이를 보였다.

용역비 기준으로 보면 도올테크(4억 7천700만원)가 부동의 1위를 기록한 가운데, 최정건축(1억 7천950만원), 한국씨.아이.엔주(1억 481700만원), 주식회사정호(1억 3천900만원), 주식회사 디티론(1억 3천700만원) 등의 순이었다.

지난해 BIM 전문업체 중 용역비 등 모든 항목에서 1위를 차지한 도올테크는 스마트빌딩 및 한국형인공지능건축기술 신사업, 스마트건축의 융합, 인공지능, 빅데이터, 클라우드 컴퓨팅 등 공적한 BIM 사업을 전개해 우수하면서 선두 자리를 차지한 것으로 나타났다.

최근 5년(2009~2013년) 누적 BIM 용역비 집계에서는 도올테크(148억5000만원)가 BIM 전문업체 부문에서, 최정건축(167억4500만원)이 건축사사무소 부문에서, 한미글로벌(128억9400만원)이 엔지니어링 부문에서 선두를 차지한 것으로 나타났다.

VOL. 07 First Issue Spring 2017

KIBIM KOREA



DoallTech

DoallTech Family Company

Total: 110 staffs, 2024.2.5



42 staffs

DoallBIM Engineering
MEP Specialists

5 Staffs

1 Staff



Doalltech
Tokyo office

Sales & Marketing

Korean 5
Vietnamese 57



Doalltech
Hanoi branch

BIM Modeling

BIM based QTO

QTO Visualization

BIM Services

BIM Engineering Services

BIM Applications Development (add-ons, libraries)

BIM Services



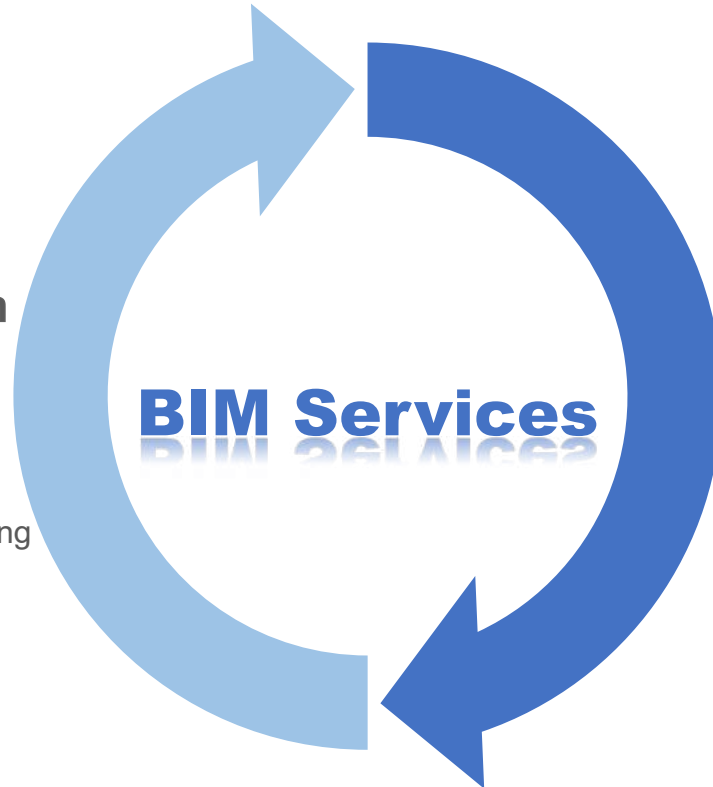
»» BIM Services Overview

BIM Engineering Service



- 2D to 3D BIM Conversion
- Construction Documentation
- Quantity Takeoff
- Construction Simulation

- ❖ Architecture/Structure/MEP BIM modeling
- ❖ BIM based 2D Drawings
- ❖ BIM Analysis - Clash detection
- ❖ Quantity takeoff and cost estimation
- ❖ Constructability
- ❖ BIM consulting



BIM Application Development

- Library Development
(BIM Library for Productivity)
- Add-on Development
(Productivity Enhancement)
 - ❖ Customized BIM tools & Library
 - ❖ Library for Architecture/ structure/ MEP/ Landscape
 - ❖ BIM based collaboration Tools

BIM Services



»» BIM Based Construction Simulation

Services

- Interdisciplinary clash and constructability check
- Progress check in 4D simulation
- Construction simulation and construction support

Expected Results

- Prevent rework from coordination error
- Construction equipment placement plan review



Construction Simulation

Projects:



Project: Yeouido Park One
Type: Mixed-use
G.F.A.: 627,674.04m²



Project: Residential BIM Project
Type: Residential
G.F.A.: 601,520.66m²



Project: Redevelopment
Type: Residential
G.F.A.: 135,083m²



Project: POSCO IFEZ Art Center
Type: Community Facilities
G.F.A.: 84,970.25m²



Project: Residential Complex
Type: Residential
G.F.A.: 102,900m²



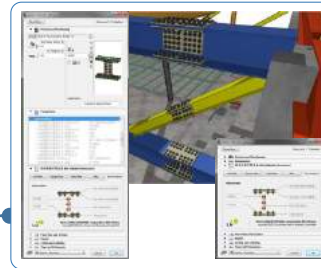
»» Intelligent Library Development

Custom library development for efficient BIM project execution



General Library

- Generic element library
- Standardized objects
- 2D symbols for architectural drawings



Project Library

- Project specific library
- Manufacturer specifications required for project
- External data import / export



Manufacturer Library

- Manufacturer product library
- Company logo, price, and specifications
- Link to manufacturer

BIM Project Portfolio

Mix - Use Complex Facilities

Office Facilities

Culture Center

Research facility

Residential Apartment

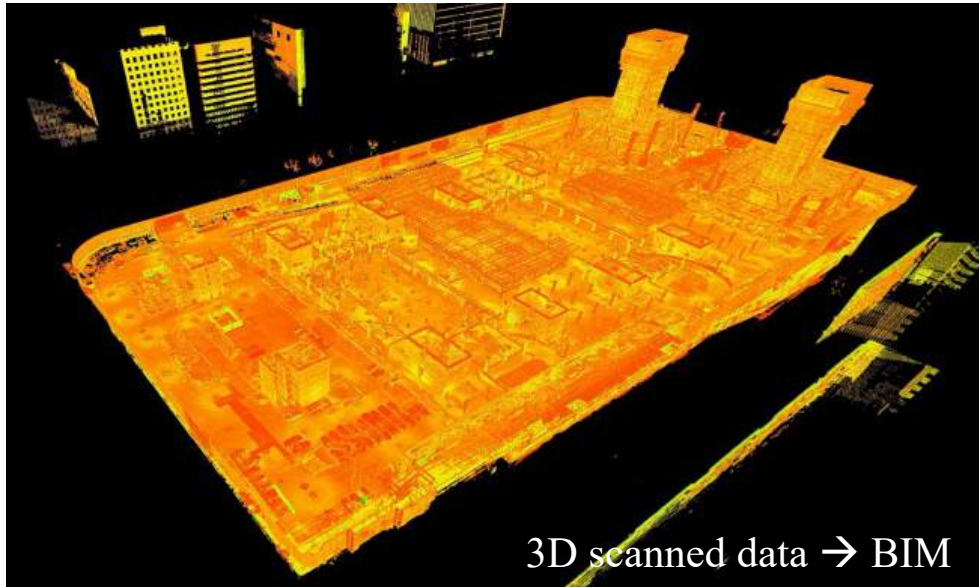
Overseas Projects

Yeouido PARC.1

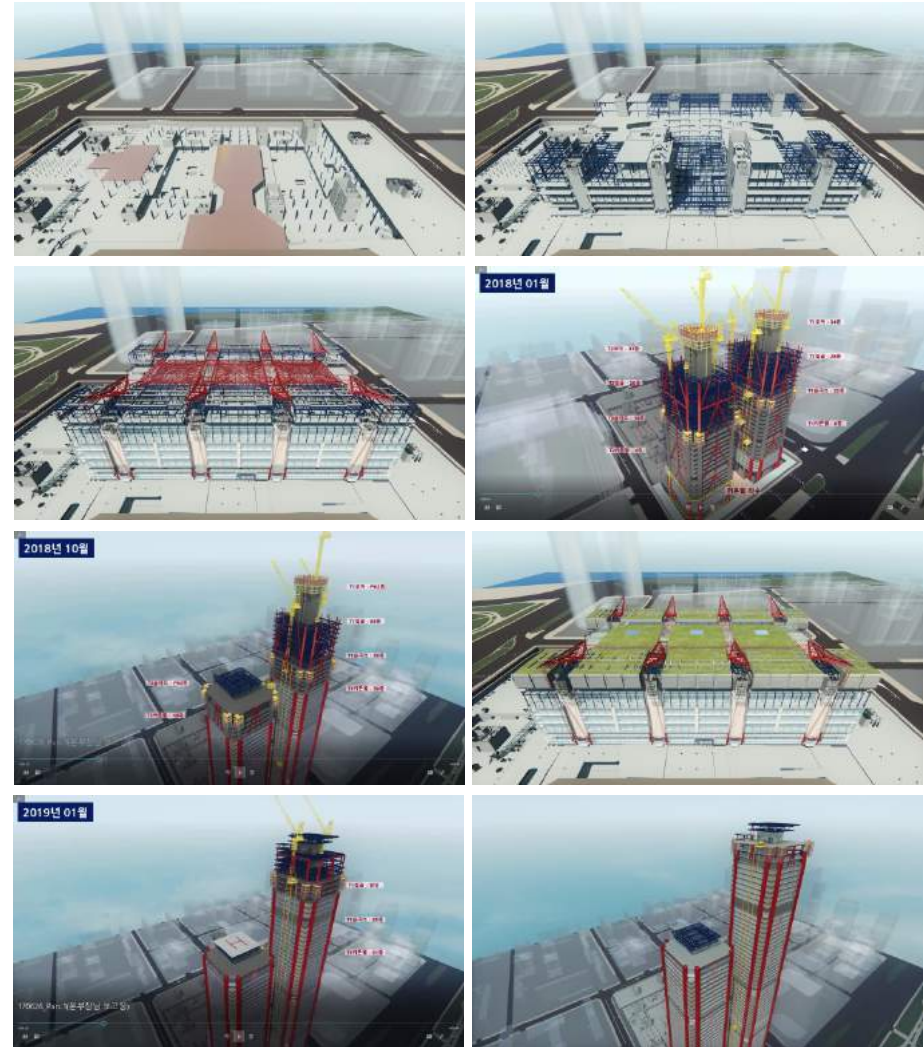
- Mix - Use Complex Facilities

Project Description

Location	Yeouido-dong, Yeongdeungpo-gu, Seoul, Korea
Client	POSCO Engineering & Construction
GFA	629,396m ²
Building Use	Shopping center , Office , Hotel B7 ~ 69F
Period of Working	Jan. 2017 ~ May. 2017
Work Scope	Construction BIM (LOD 300) , 3D scanning → BIM modeling Design Verification (Architecture, Structure, MEP)



Construction Simulation



Hanwha Gwanggyo Complex Facility

- Mix - Use Complex Facilities

Project Description

Location	Yeongtong-gu, Suwon City, Gyeonggi Province, Korea
Client	Han-hwa Engineering & Construction
GFA	7,890 m ²
Building Use	Apartment, Hotel, Retail Shop
Period of Working	Aug. 2016 ~ Oct. 2016
Work Scope	BIM Modeling for Construction bidding (LOD 200) Design & Workability Verification



Songdo Posco M1 Complex

- Mix - Use Complex Facilities

Project Description

Location	Songdo-dong, Yeon Su-gu, In cheon, Korea
Client	POSCO Engineering & Construction
GFA	539,068 m ²
Building Use	Apartment , Office hotel
Period of Working	Mar. 2018 ~ Dec. 2018
Work Scope	Design & Workability Verification Construction BIM modeling (LOD 300) Architecture : 12 Type of Unit (A.P.T & Office hotel) Structure : B3 ~ 3F MEP : MEP room on Basement



Construction Simulation

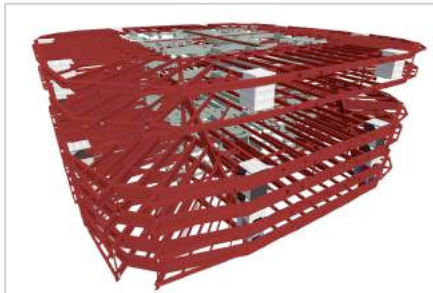
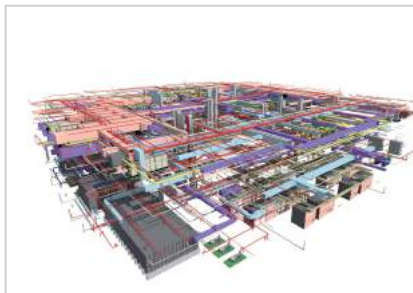


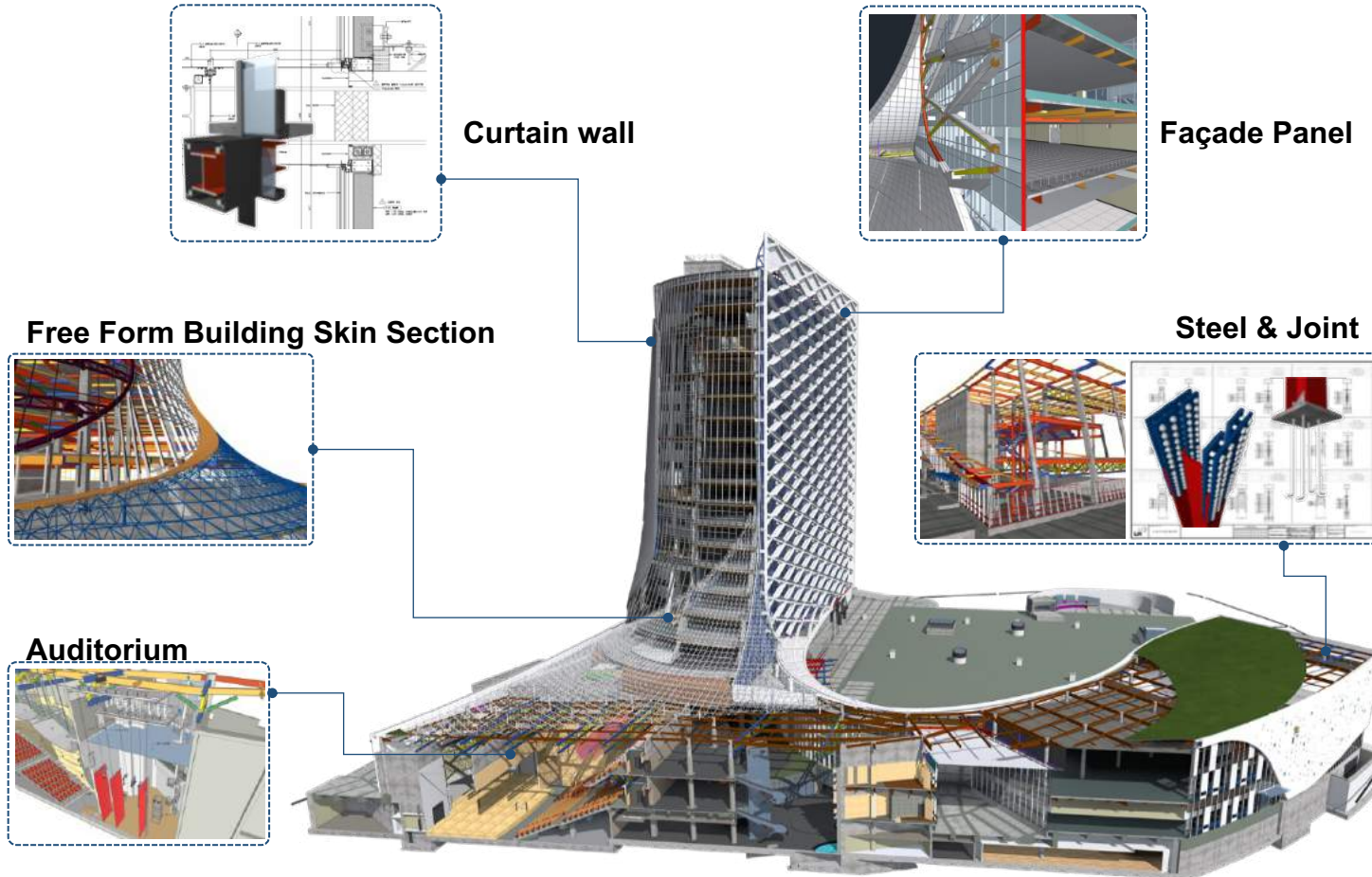
Lotte World Tower, Seoul

- Mixed-use Complex

Project Description

Location	29, Sincheon-dong, Songpa-gu, Seoul, Korea
Client	Lotte
GFA	807,500m ² , 555m, 123 floors
Building Use	Mixed-use Complex
Date	2012
Work Scope	Lotte World Tower BIM Modeling and Consulting Design BIM (LOD300), Constructability Check Architecture, Structure, MEP





Project Overview

- Project type: 20 story office complex
- Project budget: ≈ US\$260 million
- Total Area: 135,893 m² (≈1.46 million feet²)

Implementation Results

- Qualitative and quantitative BIM value analysis
- Awarded for BIM execution excellence, first in Korea

LH Chungbuk New Company Building

- Office Facilities

Project Description

Location	Cheongwon-dong, Heungdeok-gu, Cheongju City , Korea
Client	Haema Architects
GFA	3,544m ²
Building Use	Office Building
Period of Working	Feb. 2016 ~ Jun. 2016
Work Scope	Construction BIM & make 2D drawing by BIM (LOD 300) Design Verification (Total design) Video Production



BIM model

Bird Eye View

Yeouido Post-Office

- Office Facilities

Project Description

Location	Yeouido-dong, Yeongdeungpo-gu, Seoul, Korea
Client	Taeyoung construction / Gunwon
GFA	68,487m ²
Building Use	Office Building
Period of Working	Feb. 2018 ~ May. 2018
Work Scope	Construction BIM 2D drawings by BIM (LOD300) Design Verification (Total Design)



Suwon Convention Center

- Culture Center

Project Description

Location	Yeongtong-gu, Suwon-si, Gyeonggi-do , Korea
Client	Hyundai Industrial Development / DA group
GFA	97,616 m ²
Building Use	Culture Center
Period of Working	Dec. 2016 ~ Mar. 2017 , Jan.2019 ~ Feb. 2019
Work Scope	Construction BIM & make 2D drawing by BIM (LOD 300) Design Verification (Total design) Construction Simulation



Water Cluster, Daegu

- Education & Research facility

Project Description

Location	DaeGu National Industrial Complex , Korea
Client	Taeyoung / Gunwon
GFA	69,134 m ²
Building Use	Education & Research facility
Period of Working	Jul. 2016 ~ Dec. 2016
Work Scope	Construction BIM & make 2D drawing by BIM (LOD 300) Design Verification (Total design) Construction Simulation



Uijeongbu Apartment

- Residential Apartment

Project Description

Location	Gosan-dong, Uijeongbu City, Gyeonggi Province, Korea
Client	Gyeryong Engineering & Construction / TOMOON
GFA	45,567 m ²
Building Use	Apartment
Period of Working	Jul. 2016 ~ Dec. 2016
Work Scope	Construction BIM & make 2D drawing by BIM (LOD 300) Design Verification (Total design)



Yongin Dongcheon Apartment

- Residential Apartment

Project Description

Location	Dongcheon-dong, Suji-gu, Yongin-City, Korea
Client	POSCO Engineering & Construction
GFA	48,075 m ²
Building Use	Apartment
Period of Working	April. 2017 ~ jun. 2017
Work Scope	Design Verification (LOD 300) – Structure modelling (basement)



Kyeryong Apartment, Chungnam

- Residential Apartment

Project Description

Location	Kum am-dong, Kye-Ryong city, Chung-Nam, Korea
Client	Kye-Ryong Engineering & Construction
GFA	74,549 m ²
Building Use	Apartment
Period of Working	Aug. 2018 ~ Sep. 2018
Work Scope	BIM modeling for Construction bidding (LOD 200) Design & Workability Verification Construction Simulation



Construction Simulation

Interior Modelling

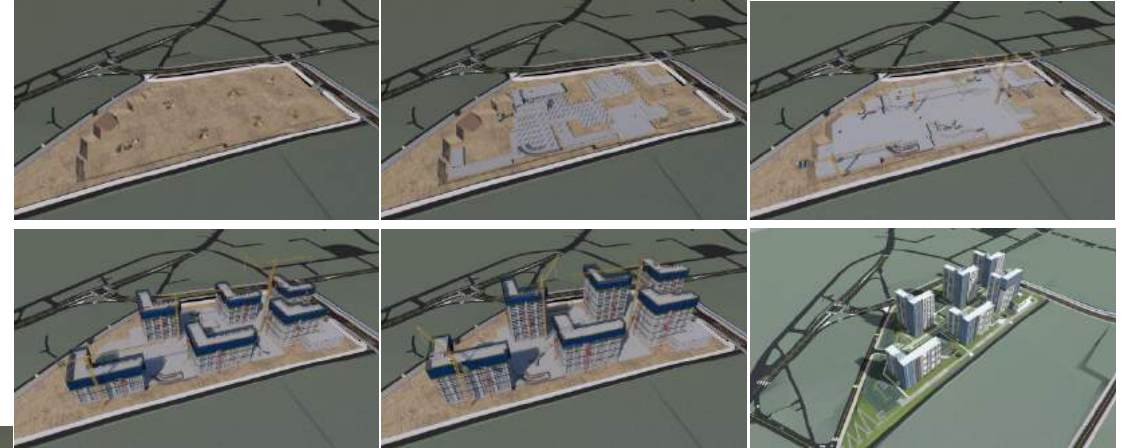


Boryong Apartment, Chungnam

- Residential Apartment

Project Description

Location	A-1BL, Bo-Ryong Meong Cheon district, Chung-Nam, Korea
Client	Kye-Ryong Engineering & Construction
GFA	98,105 m ²
Building Use	Apartment
Period of Working	Aug. 2018 ~ Sep. 2018
Work Scope	BIM modeling for Construction bidding (LOD 200) Design & Workability Verification Construction Simulation

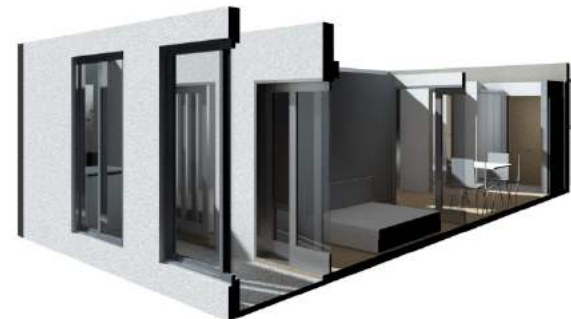


Construction Simulation



Bird Eye View Base on BIM

Interior Modelling



Villa in Gumi, Korea

- Residential Apartment

Project Description

Location 280-1 in Gumi-dong, Bundang-gu, Seongnam-si, Gyeonggi-do

Client Studio 2105 Architects & Designers

GFA 2,551m²

Building Use Apartment

Work Scope BIM modeling for Construction bidding (LOD 300)

Design & Workability Verification



Bird Eye View Base on BIM



Perspective Base on BIM



Interior Modelling

Sipjeongdong Apartment, Incheon

- Residential Apartment

Project Description

Location	Ship Jeong-dong, Pu Pyeong-gu, In cheon, Korea
Client	Incheon Development & Tourism Corporation / Taeyoung Engineering & Construction / Gunwon
GFA	190,392 m ²
Building Use	Apartment
Period of Working	Aug. 2018 ~ 2019
Work Scope	BIM modeling – Total design (LOD 300) Design & Workability Verification



Yangju Okjeong Apartment, Gyeonggido

- Residential Apartment

Project Description

Location Samseong-dong, Goam-dong, Hoam-dong, Yangju, Gyeonggi-do Area

Client Kye-Ryong Engineering & Construction

GFA 62,164 m²

Work Scope BIM modeling for Construction bidding (LOD 200)
Design & Workability Verification



Others – Design BIM

○ Korea Education Development Institute(New Office)

Project Details

Location : Jincheon-gun, Chungcheongbuk-do
Date : 2014
Gross Area : 25,816 m²
Stories : B1, 5FL



○ All in One Center

Project Details

Location : Uiwang-si, Gyeonggi-do
Date : 2011
Gross Area : 14,974 m²
Stories : B2, 3FL



Others – Design BIM

○ Masan Government Complex

Project Details

Location : Masan happo-gu, Changwon-si
Date : 2011
Gross Area : 18,127 m²
Stories : B4, 19FL



○ Digital Broadcast Contents Support Center

Project Details

Location : Ilsandong-gu, Goyang-si
Date : 2011
Gross Area : 56,107 m²
Stories : B4, 19FL

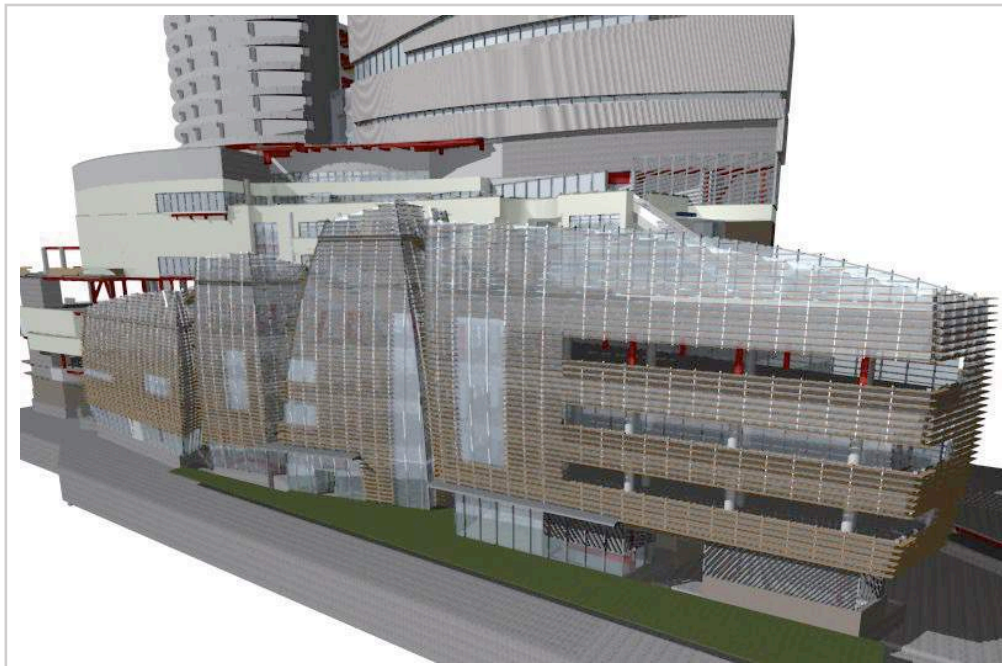


Others – Design BIM

SK Pentaport

Project Details

Location : Seobuk-gu, Cheonan-si
Date : 2008
Gross Area : 94,564 m²
Stories : B7, 51FL



POSCO Green Building

Project Details

Location : Yeonsu-gu, Incheon
Date : 2012
Gross Area : 5,548 m²
Stories : B1, 4FL

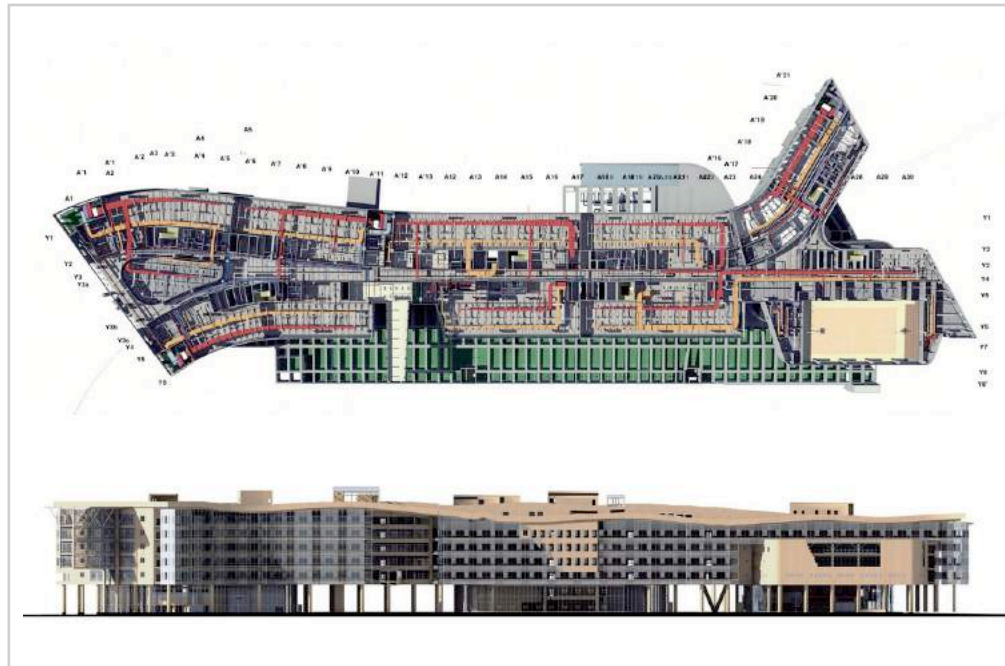


Others - 4D/5D

● Multifunctional Administrative City 1-2 Bldg.A

Project Details

Location : Jongchon-dong, Sejong
Date : 2011
Gross Area : 68,106 m²
Stories : B1, 11FL



● Environmental Industry Positive Research Complex

Project Details

Location : Yeonsu-gu, Incheon
Date : 2013
Gross Area : 5,548 m²
Stories : B1, 10FL



Others – 4D/5D

○ Military School

Project Details

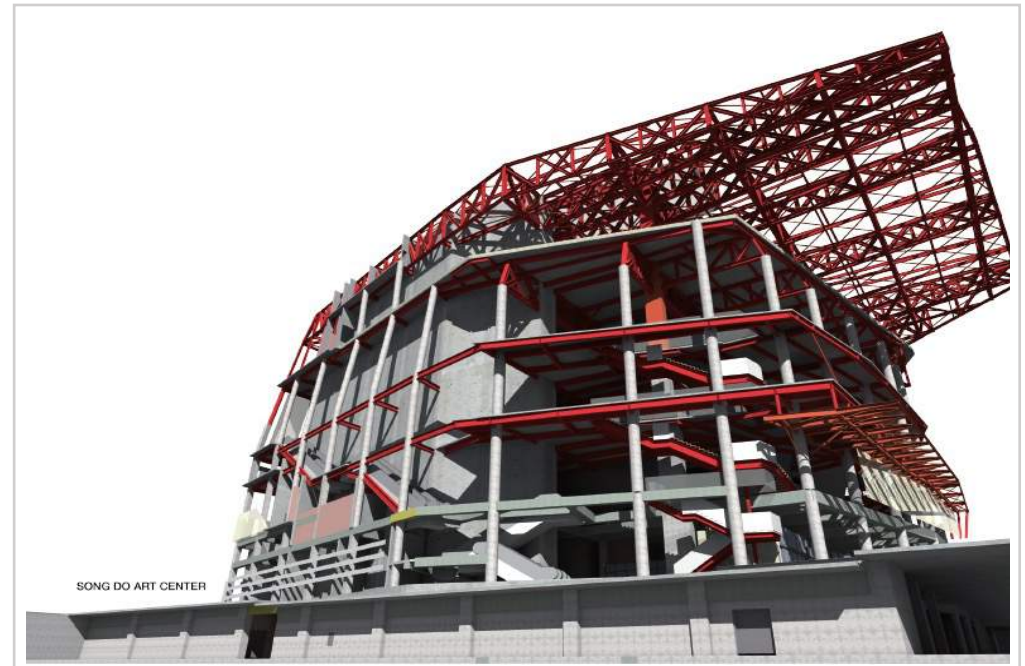
Location : Yeongdong-gun, Chungcheongbuk-do
Date : 2011
Gross Area : 138,830 m²
Stories : B1, 5FL



○ POSCO IFEZ Art Center

Project Details

Location : Yeonsu-gu, Incheon
Date : 2010
Gross Area : 84,970 m²
Stories : B1, 7FL

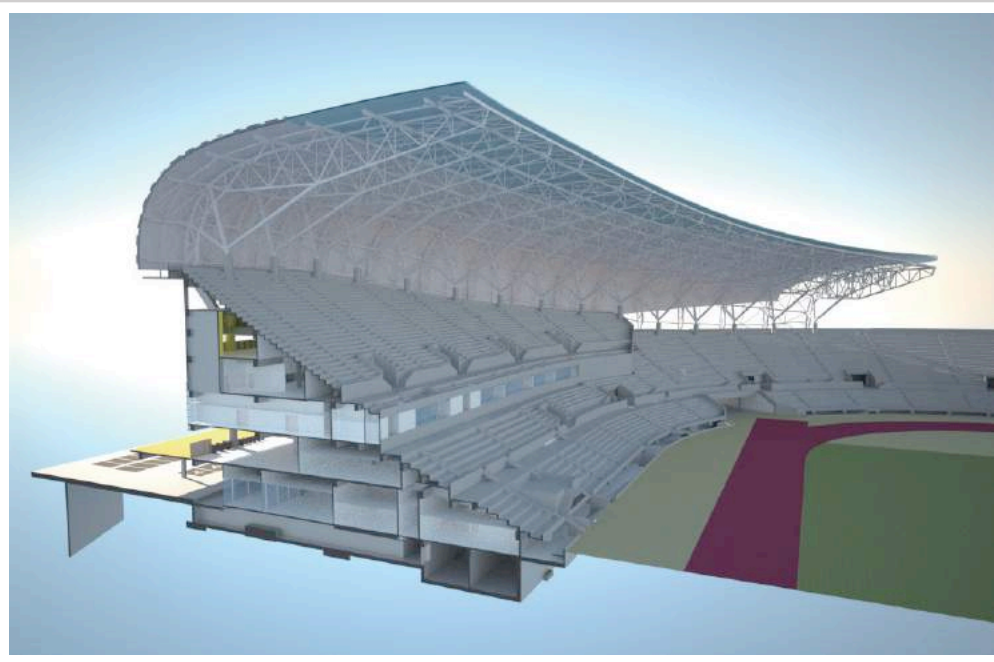
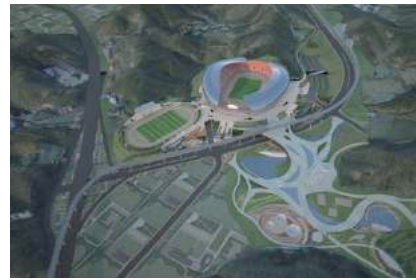


Others - Construction BIM

Yong-In Citizen Sports Park

Project Details

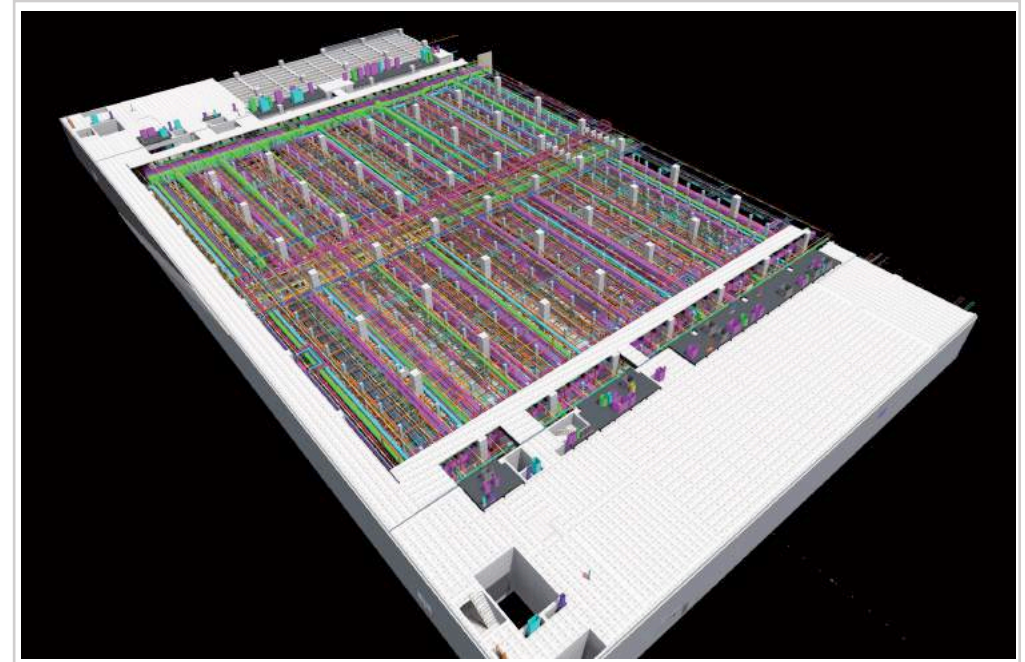
Location : Yongin-si, Gyeonggi-do
Date : 2009
Gross Area : 90,514 m²
Stories : B3, 5FL



M14 ph-1 Project FAB Design

Project Details

Location : Icheon-si, Gyeonggi-do
Date : 2015
Gross Area : 396,403 m²
Stories : B1, 10FL



300< BIM Projects of Kajima, Japan

- Overseas BIM Project

OO pharmaceutical Factory

Building Use Factory
GFA & Structure 17,757 m² (RC + S)
Work scope Construction BIM

OO Chemical Factory

Building Use Factory
GFA & Structure 7,605 m² (RC + S)
Work scope Construction BIM

OO Hospital

Building Use Hospital
GFA & Structure 6,604 m² (RC)
Work scope Construction BIM

OO Highrise Building

Building Use Office , Commercial
GFA & Structure 582,081 m² (S)
Work scope Construction BIM

OO Apartment

Building Use Apartment
GFA & Structure 1,407 m² (RC)
Work scope Construction BIM

OO City Hall

Building Use Government office building
GFA & Structure 58,811 m² (S)
Work scope Construction BIM

OO Office Building

Building Use Office building, Commercial
GFA & Structure 1,549 m² (S)
Work scope Construction BIM

OO incineration plant

Building Use Factory
GFA & Structure 8,830 m² (S)
Work scope Construction BIM

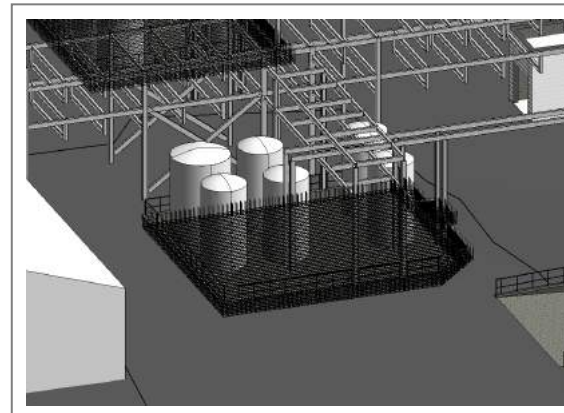
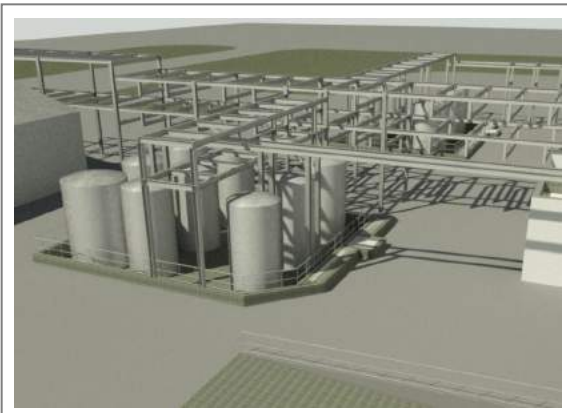
»» Patheon BIM project

Project Description

- Installing a spray drying process in their Florence East facility located in Florence, South Carolina.

Project Deliverables

- 3D scanned points data → BIM modeling
- Create Revit model and compatible 3D objects for building, spray dryer, vacuum dryers, tanks and associated equipment.
- Provide an animated simulation for the installation of the large spray dryer



Singapore, Brazil

- Overseas BIM Projects

● Singapore Fusionopolis

Project Details

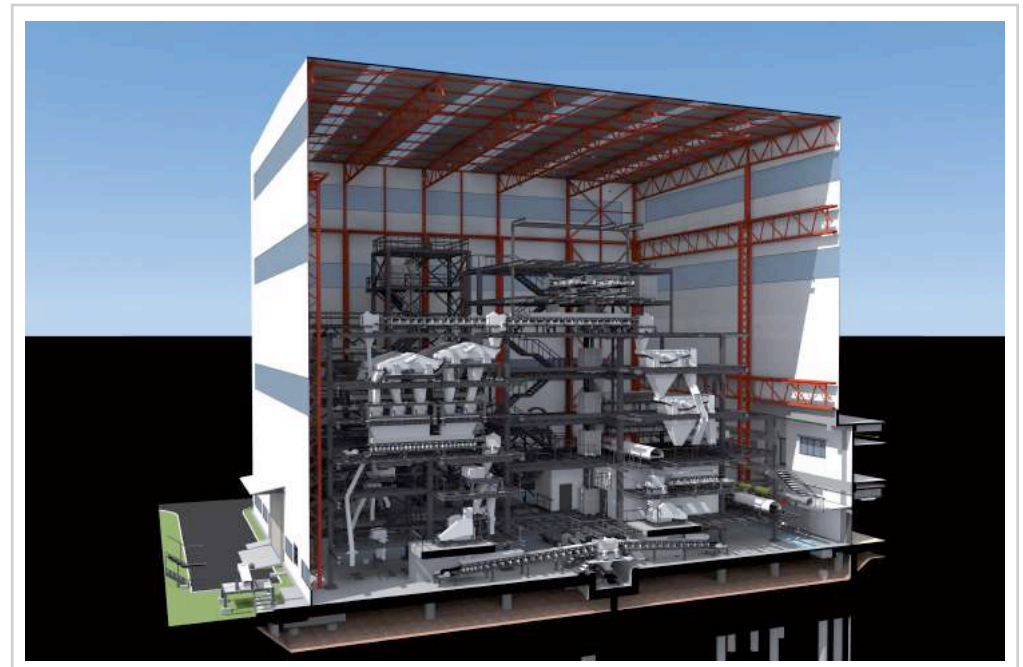
Location : PARK LOT 4506N MK03
Date : 2012
Gross Area : 103,450 m²
Stories : B3, 18FL



● Brazil CSP Water Treatment Facility

Project Details

Location : Brazil
Date : 2013
Gross Area : 9,389 m²
Stories : B1, 3FL



Questions? Looking for Partner?

Contacts: info@doalltech.com
Visit www.doalltech.com to see more info !

